

**Beacon empowers anyone in  
need through collaboration,  
connection, and advocacy for  
community wellness.**



# 2020 Beacon Impact

Beacon received 1,748 referrals and was able to enroll 80% of them in non-clinical case management.

Navigators completed 7,362 interactions with clients.

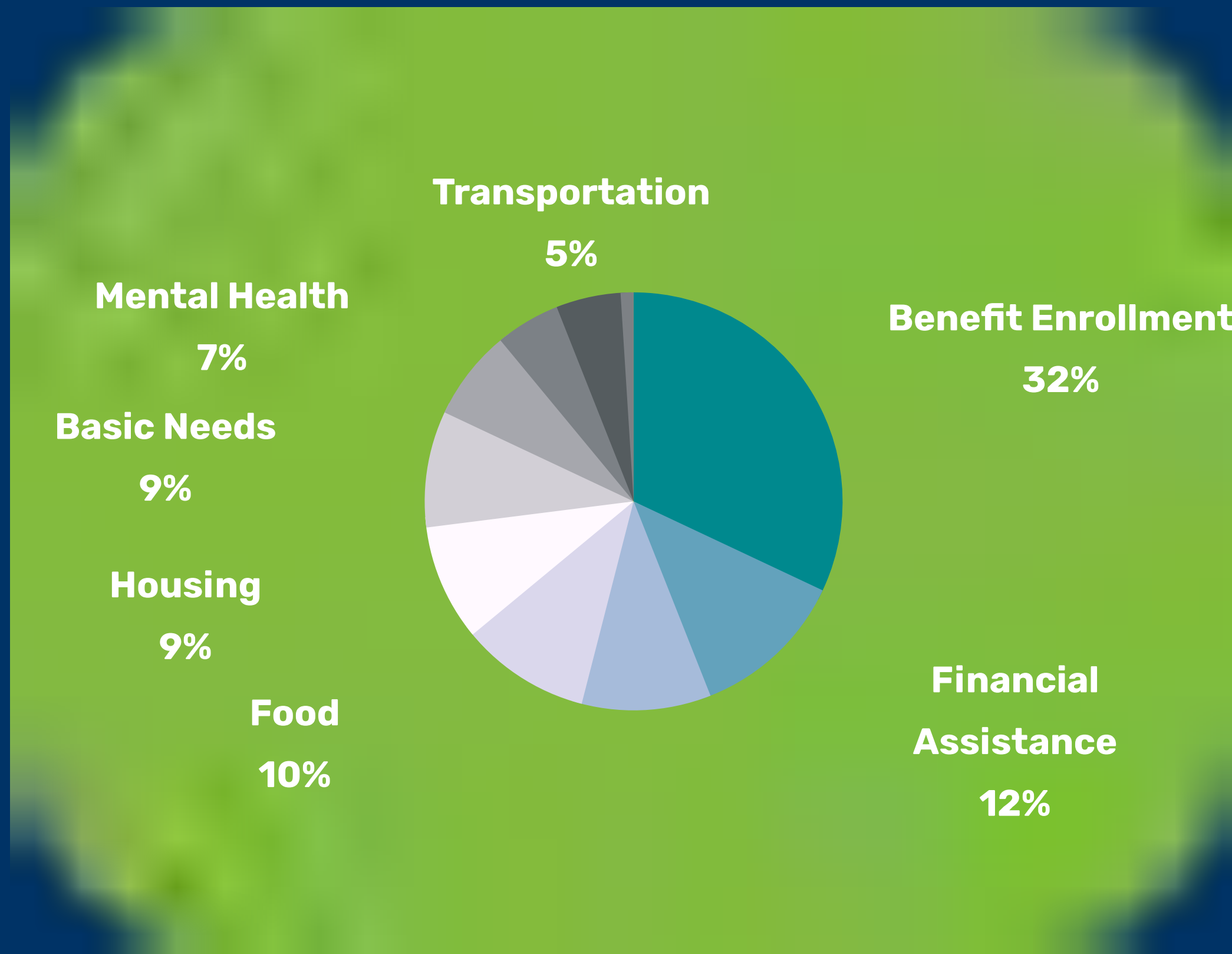
Beacon resolved 1,721 community needs for clients.

For hospital referred cases , only 6.2% were re-admitted within 30 days.



# 2020 Impact

## Community Need Types





# VIA Network

Community Integrated  
Health Network by Beacon



**A coordinated group of community and healthcare organizations focused on supporting the diverse needs of individuals and families in a community.**

Funded by a 2021 No Wrong Door Community Infrastructure Grants: Scaling Network Lead Entities by  
US Department of Health and Human Services' Administration for Community Living